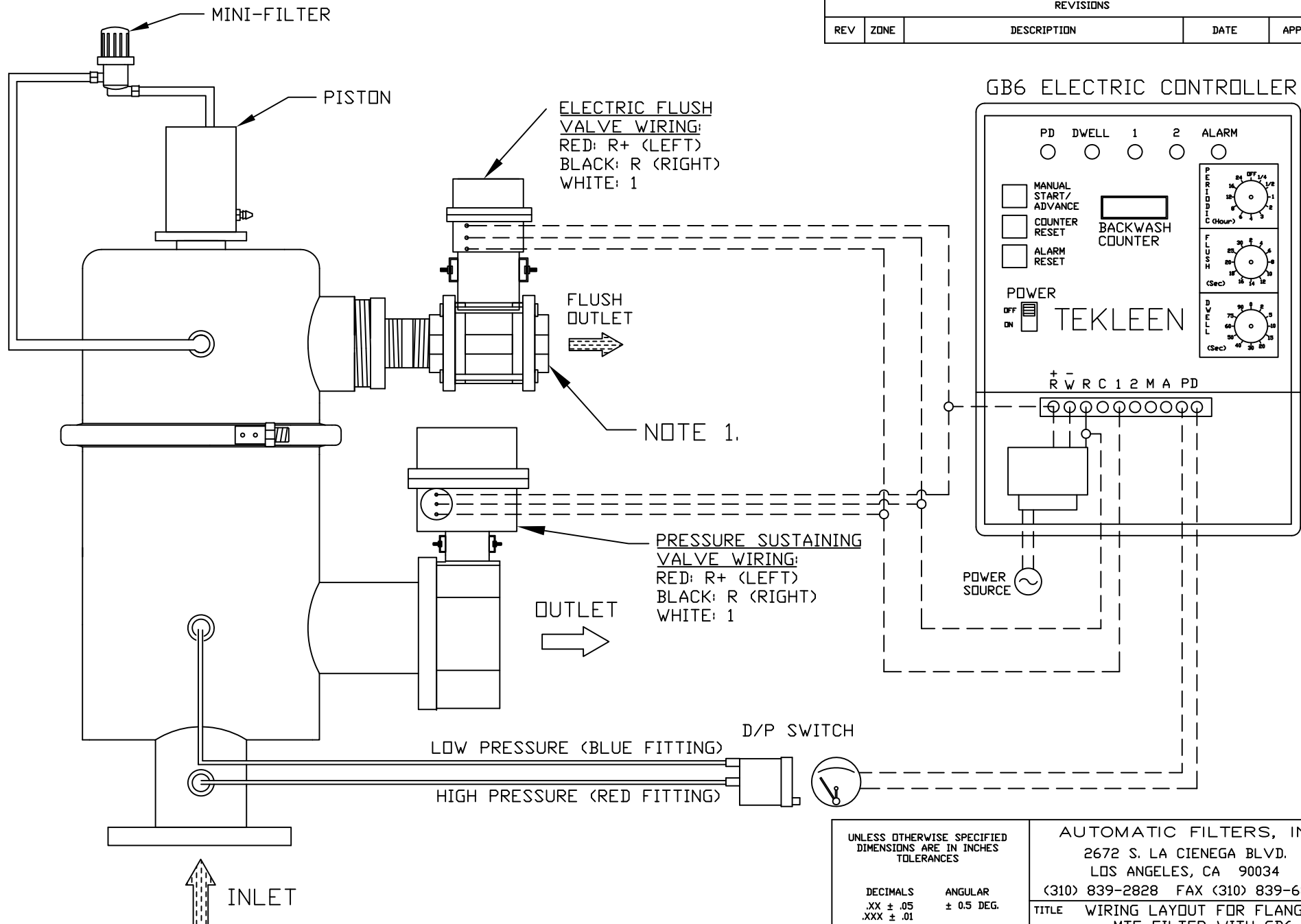


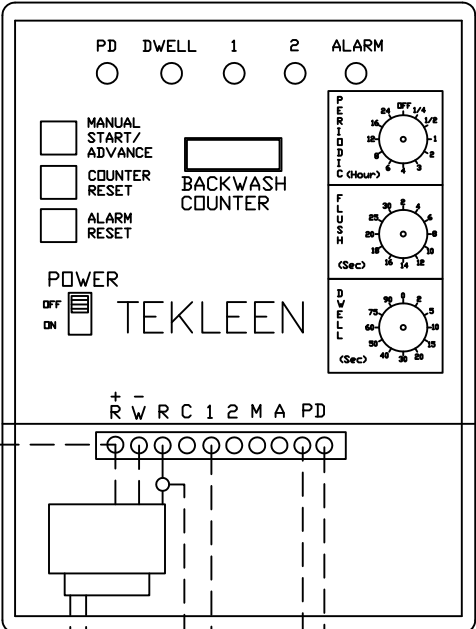
REVISIONS				
REV	ZONE	DESCRIPTION	DATE	APPROVED



ELECTRIC FLUSH VALVE WIRING:
 RED: R+ (LEFT)
 BLACK: R (RIGHT)
 WHITE: 1

PRESSURE SUSTAINING VALVE WIRING:
 RED: R+ (LEFT)
 BLACK: R (RIGHT)
 WHITE: 1

GB6 ELECTRIC CONTROLLER



NOTES:
 1. IT IS RECOMMENDED THAT A UNION BE INSTALLED BETWEEN THE FLUSH VALVE AND FLUSH LINE FOR EASE OF MAINTENANCE.

○	JUNCTION
◐	NO JUNCTION
---	ELECTRICAL CONNECTION
==	HYDRAULIC CONNECTION

UNLESS OTHERWISE SPECIFIED DIMENSIONS ARE IN INCHES TOLERANCES		AUTOMATIC FILTERS, INC. 2672 S. LA CIENEGA BLVD. LOS ANGELES, CA 90034 (310) 839-2828 FAX (310) 839-6878	
DECIMALS .XX ± .05 .XXX ± .01	ANGULAR ± 0.5 DEG.	TITLE WIRING LAYOUT FOR FLANGED MTF FILTER WITH GB6 CONTROLLER, ELECTRIC FLUSH VALVE, AND 3" OR 4" PRESSURE SUSTAINING VALVE	
DRAWN S. PERKINSON	DATE 09/13/16	SIZE A	DWG NO. WIRE-MTFGB6-EFV-PSV-LAY-06
CHECKED			REV N/A
DESIGN FOR:		NOT TO SCALE	SHEET 1 OF 1